

R-50 ATTIC STAIR COVER INSULATION KIT INSTALLATION INSTRUCTIONS

Please Read Instructions Carefully Before Beginning Installation



1. Bring assembled stair cover and R-50 Kit components into the attic.

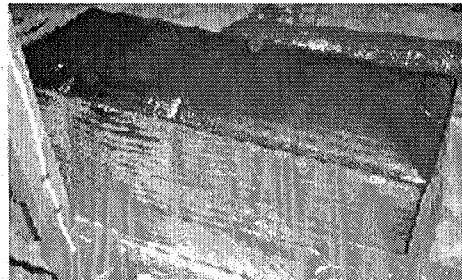


2. Open reflective shield and insert both pieces of insulation.

If providing your own insulation use multiple layers 12-16" deep.



3. IMPORTANT! The shield fits tightly around the stair cover box. **GENTLY** insert the stair cover box (open end up) into the reflective shield by slipping the stair cover box **CAREFULLY** into the shield. Pull each corner of the shield about 1" at a time, moving from corner to corner.



4. Position stair cover over the weatherstrip seal as you exit the attic.

TIP: If desired, additional insulation may be added to the sides of the stair cover between the shield and the cover if clearance allows.

THANK YOU FOR YOUR PURCHASE