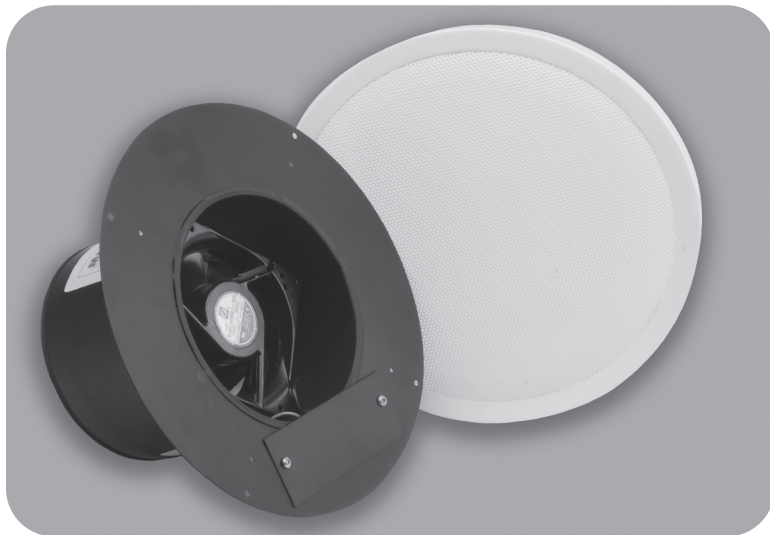


MAINSTREAM

PRODUCT MANUAL & INSTALLATION GUIDE



Direct Replacement Ventilation System
for Manufactured Housing

Please note the serial number, date of purchase, and the point of purchase below for handy reference. The serial number is located on a label affixed to the Mainstream.

Serial Number
or Code Number _____

Date of Purchase _____

Point of Purchase _____

This fan was tested in accordance with figure #12 of ANSI/ASHRAE standard 51-07, AMCA 300-08 and HVI Standard 915/916.

Unpacking your Mainstream	One (1) Ventilation Fan
When you have unpacked	One (1) Inner Grille Ring
your Mainstream carefully you	One (1) Grille Cover
will find the following:	Two (2) Wire Nuts

READ AND SAVE THESE INSTRUCTIONS

WARNING: TO REDUCE THE RISK OF FIRE, ELECTRIC SHOCK, OR INJURY TO PERSONS, OBSERVE THE FOLLOWING:

- Installation work and electrical wiring must be done by qualified person(s) in accordance with all applicable codes and standards, including fire-rated construction.
- Sufficient air is needed for proper combustion and exhausting of gases through the flue (chimney) of fuel burning equipment to prevent back drafting. Follow the heating equipment manufacturer's guideline and safety standards such as those published by the National Fire Protection Association (NFPA), and the American Society for Heating, Refrigeration and Air Conditioning Engineers (ASHRAE), and the local code authorities.
- When cutting or drilling into wall or ceiling, do not damage electrical wiring and other hidden utilities.
- Ducted fans must always be vented to the outdoors.
- If this unit is to be installed over a tub or shower, it must be marked as appropriate for the application and be connected to a GFCI (Ground Fault Circuit Interrupter) – protected branch circuit.
- Use this unit in the manner intended by the manufacturer. If you have any questions, contact the manufacturer.
- Before servicing or cleaning unit, switch power off at service panel and lock service panel to prevent power from being switched on accidentally. When the service disconnecting cannot be locked, securely fasten a prominent warning device, such as a tag to the service panel.
- Never place a switch where it can be reached from a tub or shower.
- Do not use this fan over cooking appliances.

CAUTION: For General Ventilation Use Only. Do Not Use To Exhaust Hazardous Or Explosive Materials And Vapors

CAUTION: To reduce risk of fire and to properly exhaust air, be sure to duct air outside. Do not vent exhaust air into spaces within walls or ceilings or into attics, crawl spaces, or garages.

LIKE US ON
FACEBOOK



FOLLOW US
ON TWITTER



Tamarack
Technologies, Inc.

Ventilation Solutions
www.tamtech.com

20 Patterson Brook Rd, Suite 7
West Wareham, MA 02576
774-678-4433 / 800-222-5932 / Fax 774-678-4436

INSTALLATION INSTRUCTIONS:

If you have any questions call: **800-222-5932**

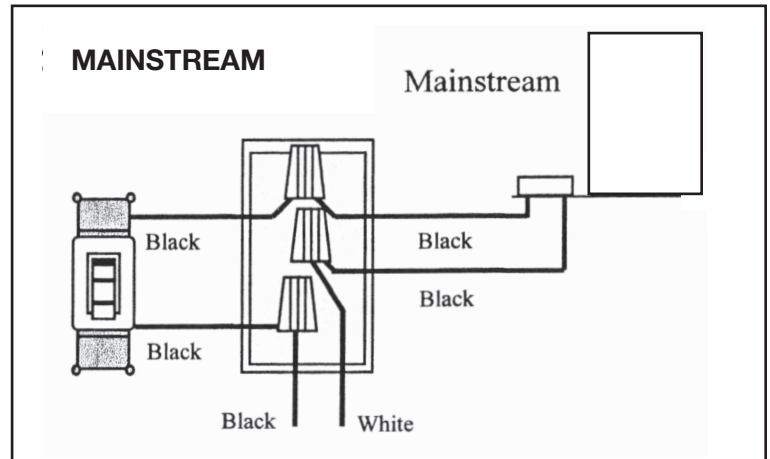
RETROFIT INSTALLATION:

1. Ensure that all power is turned off at the unit.
2. Remove the old fan.
3. Ensure that the roof cap is unobstructed.
4. On the Mainstream, remove the electrical box cover by removing the two screws on the fan housing.
5. Slide in the Mainstream, making sure that the source electrical wires are fed into the electrical box and that the Romex clamp is tightened.
6. Connect the wires by twisting each pair together and then installing a wire nut over them.
7. Screw through both the Mainstream and grille ring to attach the housing to the ceiling using original hardware and hole locations, if possible.
8. Re-install the electrical box cover.
9. Attach the grille to the grille ring.

NEW CONSTRUCTION:

1. Provide a 7 1/2" diameter rough opening in the ceiling. Notch a 2" x 3 3/4" opening for the electrical box.
2. Ensure that the roof cap is unobstructed.
3. On the Mainstream, remove the electrical box cover by removing the two screws on the fan housing.
4. Slide in the Mainstream, making sure that the source electrical wires are fed into the electrical box and that the Romex clamp is tightened.
5. Connect the wires by twisting each pair together and then installing a wire nut over them.
6. Screw through both the Mainstream and grille ring to attach the housing to the ceiling.
7. Re-install the electrical box cover.
8. Attach the grille to the grille ring.

WARNING: State and local electrical codes may require that the Mainstream be installed by a licensed electrician. Check with your local code officials before installing.



SPECIFICATIONS

Air Flow65 cfm @ .1" Wg
Power120 Volts, 16 Watts, .22 Amp
Sound Level3 Sones

LIMITED WARRANTY IF, WITHIN THE PERIOD OF 1 YEAR FROM DATE OF PURCHASE THE MAINSTREAM (THE PRODUCT) IS DEFECTIVE OR MALFUNCTIONS IN NORMAL HOME USE, TAMARACK WILL REPAIR OR REPLACE THE MAINSTREAM AT ITS DISCRETION WITHOUT CHARGE FOR LABOR OR MATERIALS. CUSTOMER IS RESPONSIBLE FOR SHIPPING CHARGES.

CONDITIONS, EXCLUSIONS, AND LIMITATIONS -THIS WARRANTY IS SUBJECT TO THE FOLLOWING CONDITIONS, EXCLUSIONS AND LIMITATIONS. THIS WARRANTY DOES NOT COVER PROBLEMS RESULTING FROM INSTALLATION, OPERATION OR MAINTENANCE THAT HAS BEEN UNDERTAKEN OTHER THAN IN ACCORDANCE WITH THE INSTRUCTIONS. THIS WARRANTY DOES NOT COVER PROBLEMS RESULTING FROM DEFECTS IN OR CAUSED BY ASSOCIATED EQUIPMENT (FURNACES, SOLARIA, ETC.) ; FROM REPAIRS OR MODIFICATIONS ATTEMPTED BY PERSONS OTHER THAN TAMARACK.; FROM ABUSE, ACCIDENTAL OR SHIPPING DAMAGE, ACTS OF GOD. THIS WARRANTY DOES NOT APPLY TO THE PRODUCT USED OUTSIDE THE UNITED STATES, ITS TERRITORIAL POSSESSIONS AND CANADA. EXCEPT AS SET FORTH ABOVE, NO EXPRESS OR IMPLIED WARRANTY IS GIVEN OR AUTHORIZED BY TAMARACK. AND ALL OTHER SUCH WARRANTIES ARE EXPRESSLY DISCLAIMED. ANY WARRANTY OR MERCHANTABILITY OF FITNESS FOR ANY PARTICULAR PURPOSE SHALL BE LIMITED TO THE WARRANTY HEREUNDER. MOREOVER, ANY LIABILITY OF TAMARACK FOR THE PRODUCT SHALL BE LIMITED TO THE REPLACEMENT OF THE PRODUCT. IN NO EVENT SHALL TAMARACK BE LIABLE FOR ANY INCIDENTAL DAMAGES OR FOR ANY CONSEQUENTIAL PROPERTY OR COMMERCIAL DAMAGES, IRRESPECTIVE OF THE CAUSE THEREOF, OCCURRING EITHER DURING OR AFTER THE WARRANTY PERIOD. INCLUDING WITHOUT LIMITATION ANY DAMAGE TO ANY PART OF A BUILDING OR ITS CONTENTS. NOTE: SOME STATES DO NOT ALLOW THE EXCLUSION OR LIMITATION OF INCIDENTAL OR CONSEQUENTIAL DAMAGES AND SOME STATES DO NOT ALLOW LIMITATIONS ON HOW LONG AN IMPLIED WARRANTY LASTS, SO THE ABOVE LIMITATIONS OR EXCLUSIONS MAY NOT APPLY TO YOU. THIS WARRANTY GIVES YOU SPECIFIC LEGAL RIGHTS AND YOU MAY ALSO HAVE OTHER RIGHTS THAT VARY FROM STATE TO STATE.

PROOF OF PURCHASE REQUIRED.

LIKE US ON
FACEBOOK



FOLLOW US
ON TWITTER



20 Patterson Brook Rd, Suite 7
West Wareham, MA 02576
774-678-4433 / 800-222-5932 / Fax 774-678-4436