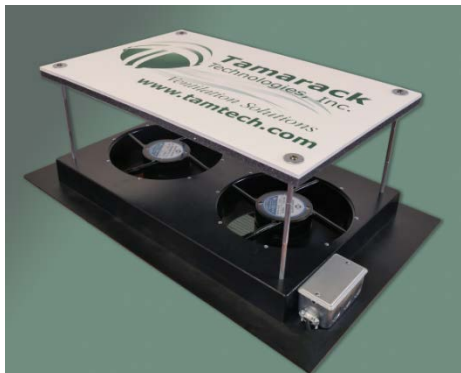


QC2000

Quiet Californian Whole House Fan

PRODUCT MANUAL & INSTALLATION GUIDE



The QC2000 is used to assist in the natural cooling process of the house. When the outside temperature drops below the inside temperature, the cooler outside air can be used to cool the house. The QC2000 will pull the cooler air from the outside, through the house, up into the attic and push the hot air outside. The QC2000 is a fan product and will not cool the house below the outside air temperature or create a noticeable breeze. The QC2000 can be used any time, for as long as needed, to cool or change the air in the house.

DATE OF PURCHASE _____

POINT OF PURCHASE _____

READ AND SAVE THESE INSTRUCTIONS

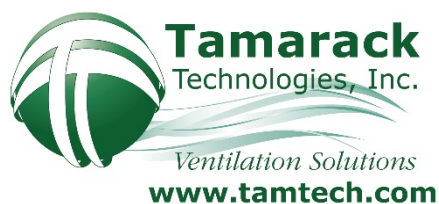
⚡WARNING: TO REDUCE THE RISK OF FIRE, ELECTRIC SHOCK, OR INJURY TO PERSONS, OBSERVE THE FOLLOWING:

- **DO NOT USE THIS FAN WITH ANY SOLID-STATE SPEED CONTROL DEVICE.**
- Use this unit in the manner intended by the manufacturer. If you have any questions contact the manufacturer.
- Before servicing or cleaning unit, switch power off at service panel and lock service panel to prevent power from being switched on accidentally. When the service disconnect cannot be locked, securely fasten a prominent warning device, such as a tag, to the service panel.
- When cutting or drilling into wall or ceiling, do not damage electrical wiring or other hidden utilities.
- Never place a switch where it can be reached from a tub or shower.
- Do not use this fan over a tub or shower.
- Do not use this fan over cooking appliances.

⚡CAUTION: For General Ventilation Use Only. Do Not Use To Exhaust Hazardous Or Explosive Materials And Vapors

⚡CAUTION: This unit has an unguarded impeller. Do Not Use in Locations Readily Accessible to People or Animals.

Material Included	Tools and Supplied Needed (not provided)
<ul style="list-style-type: none">(1) QC2000 Fan (with 6' line cord)(4) Screw, Phillips Head 6-32x3/4(4) Keps Nut 8/32(12) Standoff Hex 8-32 x 2-1/2(8) Fender Washer #10(1) Tamarack Damper Panel(1) Grille 24 x 14 (ID) Return Air (Wh)	<ul style="list-style-type: none">• 2x wood stock (match to existing attic floor framing)• Weather Strip and low expansion spray foam sealant• #2 Phillips head screw driver• 1/4" Nut driver/socket set• 5/16" Nut driver/socket set• Screw Gun• Hammer• Nails (for installation of 2x wood stock)• Drywall Saw or Utility Knife



20 Patterson Brook Rd / West Wareham, MA 02576
774-678-4433 / 800-222-5932 / Fax 774-678-4436

Determine the Best Location for the QC2000

The QC 2000 should be located as central as possible to the area that you want to cool. Above a central hallway or at the top of a stairwell provide the best airflow. Cooler outside air should be able to move through the window, the space that needs to be cooled, and exhaust out through the fan into the attic. A switched outlet will need to be within six feet of the QC 2000 for the line cord to plug into and provide power.

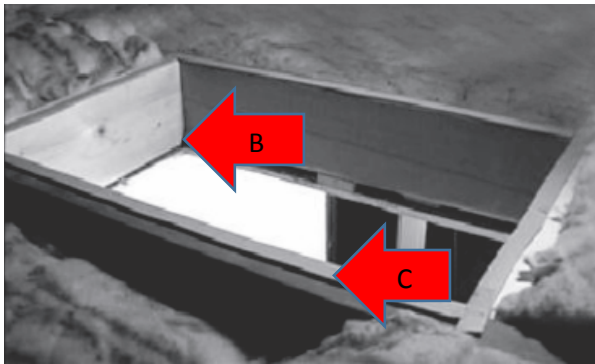
- Make sure that there aren't any pipes, wires, rafters, air conditioning or heating ducts in the space where the QC2000 will be installed that will interfere with the dampers movement while operating
- Make sure that you have adequate exhaust area out of your attic. This can be accomplished with the combination of roof, ridge or gable end vents. The QC2000 requires a minimum of 5 square feet of attic venting.

Installing the QC2000

Prepare the opening for the installation of the fan.

The fan housing will fit either 16" or 24" on-center framing.

- Create a wooden frame base of 22 1/2" X 14 1/2" for the fan to mount on top of with 2x wood stock.
- Cut two pieces of 2x wood stock of the same dimension as the existing joists (2x6 or 2x8 etc.). Add these pieces of stock to form a box (frame) between the joists.
- Place weather stripping on the top of the frame around the opening for the fan to sit on.
- Remove the drywall within the box to create an air chamber for the exhaust air to flow through. (picture shown from living space)



- Some types of ceilings are spaced away from the joists. Any gap between the 2x's and the ceiling should be sealed prior to final installation. Install low expanding spray foam between any gaps on the back side of the drywall and wood framing within the air chamber.
- Install grille (6 screws included) on the ceiling below the fan.



Installing the QC2000 (con't)

Install (or use) a switched controlled power outlet.

The QC2000 plugs into a switch controlled outlet. Provide an outlet within six feet of the fan for the line cord to plug into.

Prepare the fan before installation. Assembly required.

- A. Insert the threaded end of the standoffs through the holes in the housing. On the inside of the housing secure each standoff with a fender washer and Keps nut.
- B. Place the damper door over the guide posts (standoffs) with the labeled side facing the attic.

Install the fan.

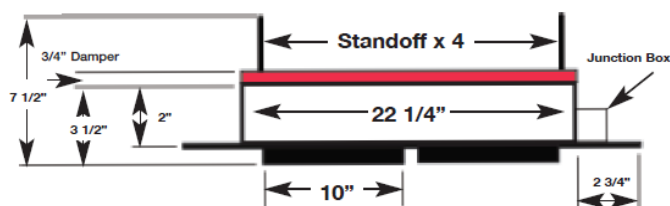
- A. Install the fan on the frame on top of the air chamber opening. The housing mounting flanges will overlap the frame.
- B. If desired you may secure the fan to the top of the frame by using wood screws through the outer perimeter mounting flange.
- C. Install two standoffs to each already mounted.
- D. Install a fender washer with a Phillips head screw to the top end of each damper guide post (Standoffs). The damper should move freely up and down the standoffs when the fan is turned on or off.
- E. Plug the fan into the switch controlled power outlet.

Care and Maintenance

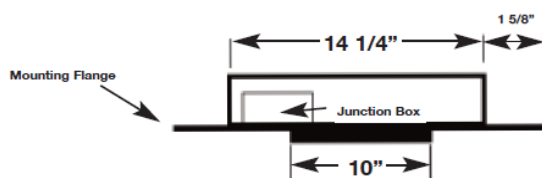
Keep dirt, dust and debris from the fan. We recommend you periodically remove the grille from within the living space and dust the fan blades.

Do not place objects on top of the damper panel.

Specifications



DIMENSIONS



Electrical Requirements:115V, 60 Hz
Power:230 Watts
Airflow:1600 CFM
Unit Weight:13 lbs
Shipping Weight:.....25 lbs
Shipping Box Size:.....21 5/8 x 7 5/8 x 29 1/2"
Rough Opening.....22 1/2 x 14 1/2"
Grille Dimensions (OD):.....15 3/4 x 25 3/4"

Product Recommendation



The MFL20 “Muffler” is an insulated raised frame acoustical plenum box engineered to reduce whole house fan sound levels.

Weights 19 Lbs.

Inside Rough Opening 14 ½ X 22 ½

Outside Dimensions 26” X 18” X 12”

Constructed in Galvanized Steel.

The “Muffler” **Reduces Sound Levels** in your home

The Muffler will also prevent blown in cellulose insulation that may be surrounding the QC2000 from being blown away. The Muffler will raise the fan 12” above the attic floor. Order Part # TTi-MFL20

LIMITED WARRANTY If, within the period of ten years from the date of purchase, the QC2000 (the Product) is defective or malfunctions in normal home use, Tamarack Technologies, Inc. will repair or replace the Product, at its discretion. Customer is responsible for shipping charges.

CONDITIONS, EXCLUSIONS, AND LIMITATIONS

This Warranty is subject to the following conditions, exclusions and limitations:

THIS WARRANTY DOES NOT COVER PROBLEMS RESULTING FROM INSTALLATION, OPERATION OR MAINTENANCE THAT HAS BEEN UNDERTAKEN OTHER THAN IN ACCORDANCE WITH THE INSTRUCTIONS. THIS WARRANTY DOES NOT COVER PROBLEMS RESULTING FROM DEFECTS IN OR CAUSED BY ASSOCIATED EQUIPMENT (FURNACES, SOLARIA, ETC.); FROM REPAIRS OR MODIFICATIONS ATTEMPTED BY PERSONS OTHER THAN TAMARACK TECHNOLOGIES, INC.; FROM ABUSE, ACCIDENTAL OR SHIPPING DAMAGE OR ACTS OF GOD. THIS WARRANTY DOES NOT APPLY TO THE PRODUCT USED OUTSIDE THE UNITED STATES, ITS TERRITORIAL POSSESSIONS, AND CANADA. EXCEPT AS SET FORTH ABOVE, NO EXPRESS OR IMPLIED WARRANTY IS GIVEN OR AUTHORIZED BY TAMARACK TECHNOLOGIES, INC. AND ALL OTHER SUCH WARRANTIES ARE EXPRESSLY DISCLAIMED. ANY WARRANTY OR MERCHANTABILITY OF FITNESS FOR ANY PARTICULAR PURPOSE SHALL BE LIMITED TO THE WARRANTY HEREUNDER. MOREOVER, ANY LIABILITY OF TAMARACK TECHNOLOGIES, INC. FOR THE PRODUCT SHALL BE LIMITED TO THE REPLACEMENT VALUE OF THE PRODUCT. IN NO EVENT SHALL TAMARACK TECHNOLOGIES, INC. BE LIABLE FOR ANY INCIDENTAL DAMAGES OR FOR ANY CONSEQUENTIAL PROPERTY OR COMMERCIAL DAMAGES, IRRESPECTIVE OF THE CAUSE THEREOF, OCCURRING EITHER DURING OR AFTER THE WARRANTY PERIOD, INCLUDING WITHOUT LIMITATION ANY DAMAGES TO ANY PART OF A BUILDING OR ITS CONTENTS. NOTE: SOME STATES DO NOT ALLOW THE EXCLUSION OR LIMITATION OF INCIDENTAL OR CONSEQUENTIAL DAMAGES AND SOME STATES DO NOT ALLOW LIMITATIONS ON HOW LONG AN IMPLIED WARRANTY LASTS, SO THE ABOVE LIMITATIONS OR EXCLUSIONS MAY NOT APPLY TO YOU. THIS WARRANTY GIVES YOU SPECIFIC LEGAL RIGHTS AND YOU MAY ALSO HAVE OTHER RIGHTS THAT VARY FROM STATE TO STATE. **PROOF OF PURCHASE REQUIRED.**

QC2000.1



20 Patterson Brook Rd / West Wareham, MA 02576
774-678-4433 / 800-222-5932 / Fax 774-678-4436